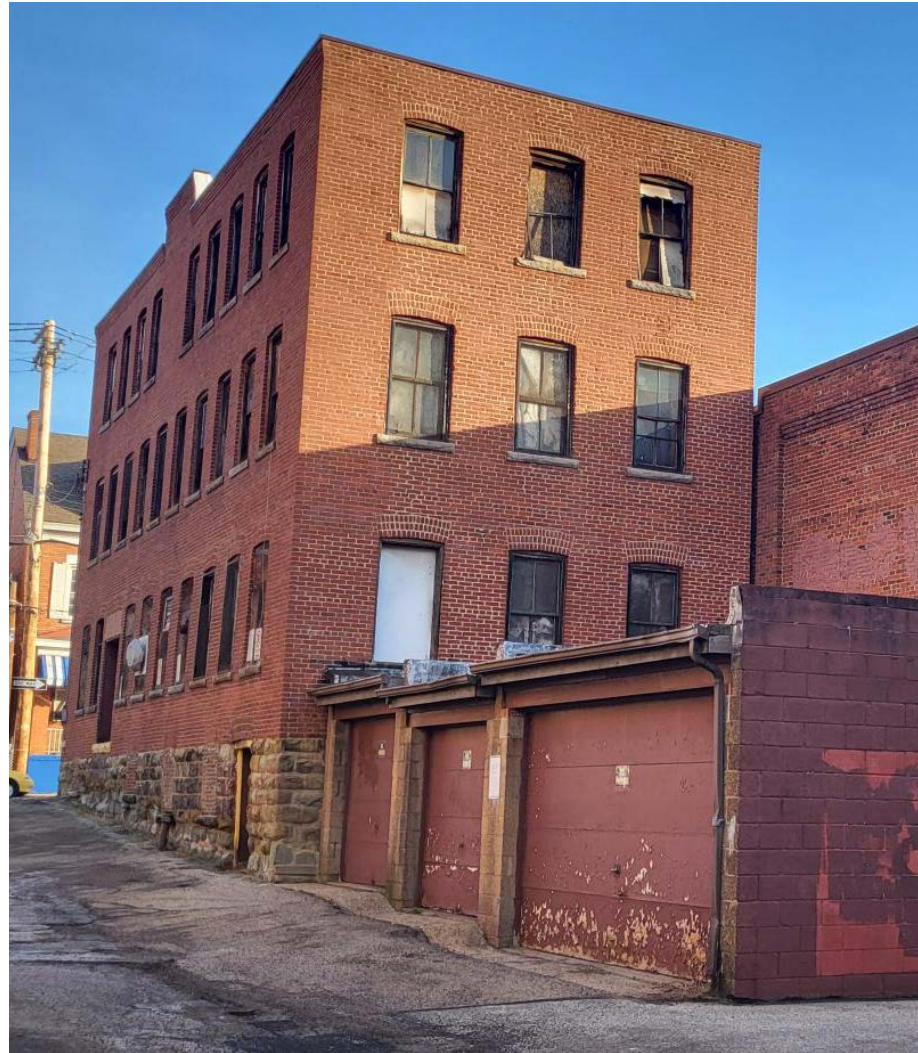


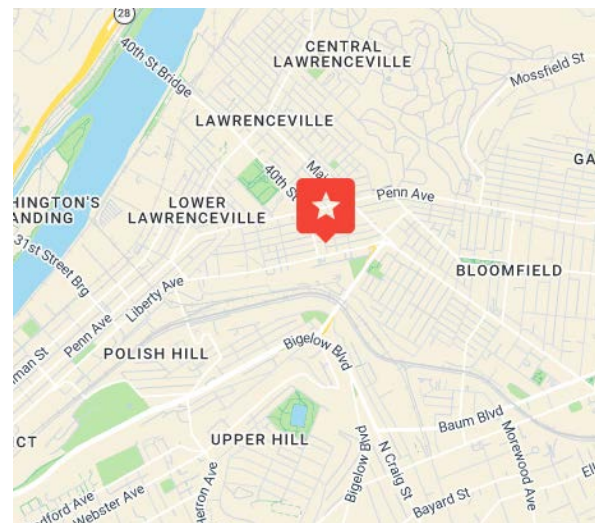
OFFICE BUILDING
FOR SALE

4014 HOWLEY STREET, PITTSBURGH, PA 15214



PROPERTY FEATURES:

- Three-story ±3,600 GSF building with three-car garage
- Located in the 9th Ward, City of Pittsburgh
- NDI – Neighborhood Industrial zoning
- New roof and exterior brick pointing (circa 2025)
- Ideal for office, creative studio, or residential conversion
- **Offered at \$495,000**



CONTACT:

JAY PHOEBE
jphoebe@hannacre.com
412 261 2200

ERIC J. LAMM
elamm@hannacre.com
412 261 2200

HANNA COMMERCIAL REAL ESTATE

11 STANWIX ST., SUITE 1024
PITTSBURGH, PA 15222
HANNACRE.COM

All information furnished regarding property for sale, rental or financing is from sources deemed reliable. No representation is made as to the accuracy thereof, and it is submitted subject to errors, omissions, change of price, rental, or other conditions, prior sale lease, financing or withdrawal without notice. Hanna Commercial will make no representation, and assume no obligation, regarding the presence or absence of toxic or hazardous waste or substances or other undesirable material on or about the property.



CONTACT:

JAY PHOEBE

jphoebe@hannacre.com

412 261 2200

ERIC J. LAMM

elamm@hannacre.com

412 261 2200

HANNA COMMERCIAL REAL ESTATE

11 STANWIX ST., SUITE 1024

PITTSBURGH, PA 15222

HANNACRE.COM