

PURCHASE OPPORTUNITY

LAND FOR SALE

CLAIRTON ROAD, PITTSBURGH, PA 15122

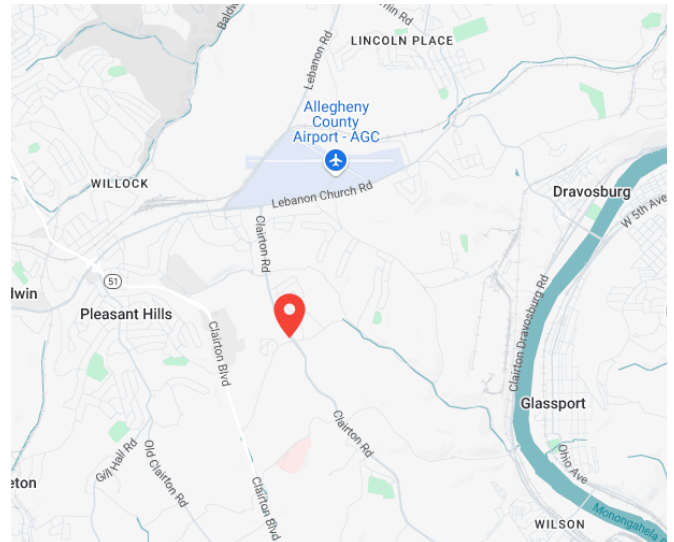


**ASKING PRICE:
\$450,000**

26.8 ACRES

PROPERTY FEATURES:

- 26.8 Acres For Sale
- Located at the intersection of Clairton Road & N. Lewis Run Road
- Minutes from Clairton Blvd. retail
- 1.4 miles to Jefferson Hospital and 3 miles to Mon-Fayette Expressway
- Signalized intersection
- Over 15,000 vehicles daily
- Zoned: R-1 Single Family Residential



CONTACT:

BRIAN KERR

bkerr@hannacre.com
412 261 2200

ADAM JOYCE

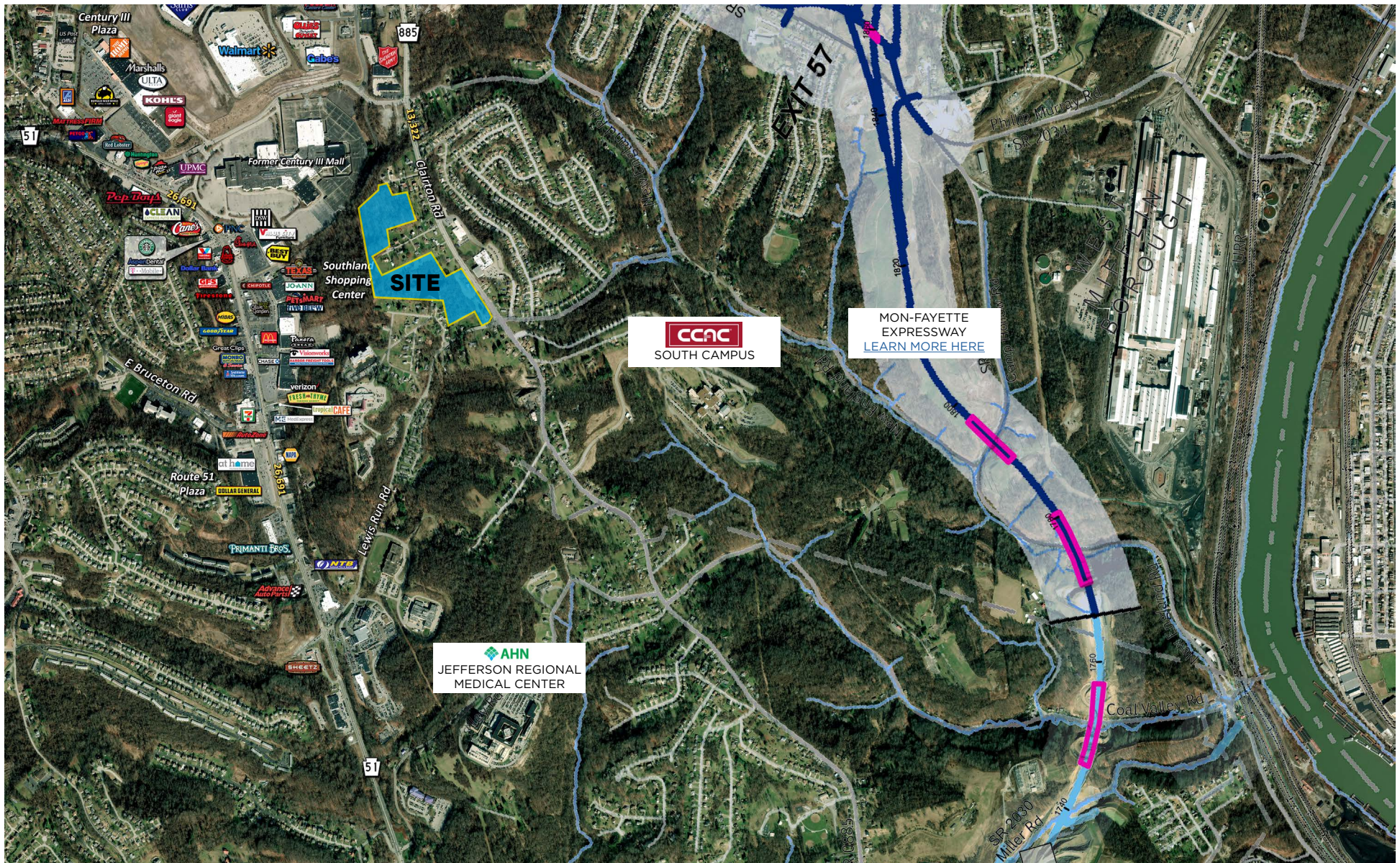
ajoyce@hannacre.com
412 261 2200

A MEMBER OF
CHAINLINKS
RETAIL ADVISORS

HANNA COMMERCIAL REAL ESTATE

11 STANWIX ST., SUITE 1024
PITTSBURGH, PA 15222
HANNACRE.COM

All information furnished regarding property for sale, rental or financing is from sources deemed reliable. No representation is made as to the accuracy thereof, and it is submitted subject to errors, omissions, change of price, rental, or other conditions, prior sale lease, financing or withdrawal without notice. Hanna Commercial will make no representation, and assume no obligation, regarding the presence or absence of toxic or hazardous waste or substances or other undesirable material on or about the property.



CONTACT:

BRIAN KERR

bkerr@hannacre.com

412 261 2200

ADAM JOYCE

ajoyce@hannacre.com

412 261 2200

A MEMBER OF
CHAINLINKS
RETAIL ADVISORS

HANNA COMMERCIAL REAL ESTATE

11 STANWIX ST., SUITE 1024

PITTSBURGH, PA 15222

HANNACRE.COM

All information furnished regarding property for sale, rental or financing is from sources deemed reliable. No representation is made as to the accuracy thereof, and it is submitted subject to errors, omissions, change of price, rental, or other conditions, prior sale lease, financing or withdrawal without notice. Hanna Commercial will make no representation, and assume no obligation, regarding the presence or absence of toxic or hazardous waste or substances or other undesirable material on or about the property.