

# BUILDING & LAND FOR SALE

ONE GREENVILLE ORTHOPEDIC CENTER  
SOUTH MAIN ST. (RT 358) GREENVILLE, PA 16125 | MERCER COUNTY

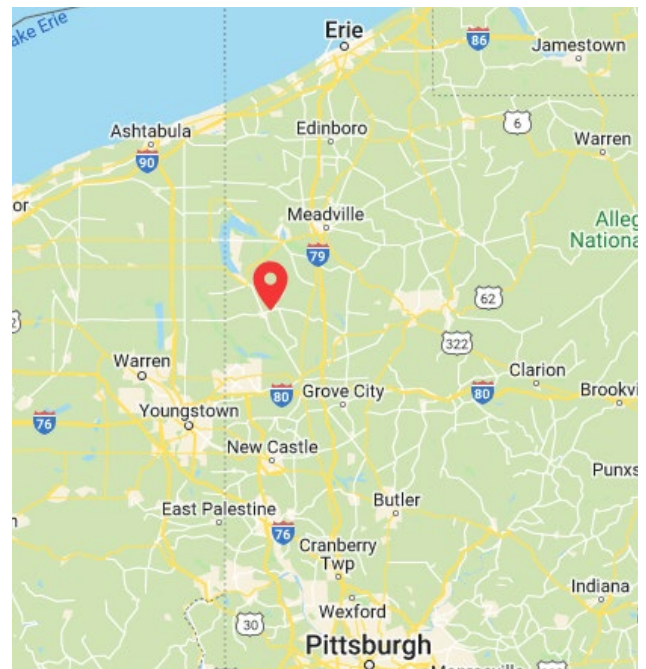


**ASKING PRICE: \$850,000**



## PROPERTY FEATURES:

- 4.53 acre land offering for sale
- Four (4) total parcels that include a 21,440 SF office/retail building and 2 residential homes
- Asking price: \$850,000
- Main retail corridor in Greenville
- 9,595 ADT along South Main Street (Rt 358)
- Close proximity to UPMC Horizon & Thiel College
- Zoned Mixed Use (B)



CONTACT:

**ADAM JOYCE**

ajoyce@hannacre.com

412 261 2200

**JAKE VOGEL**

jvogel@hannacre.com

**HANNA COMMERCIAL REAL ESTATE**

11 STANWIX ST., SUITE 1024

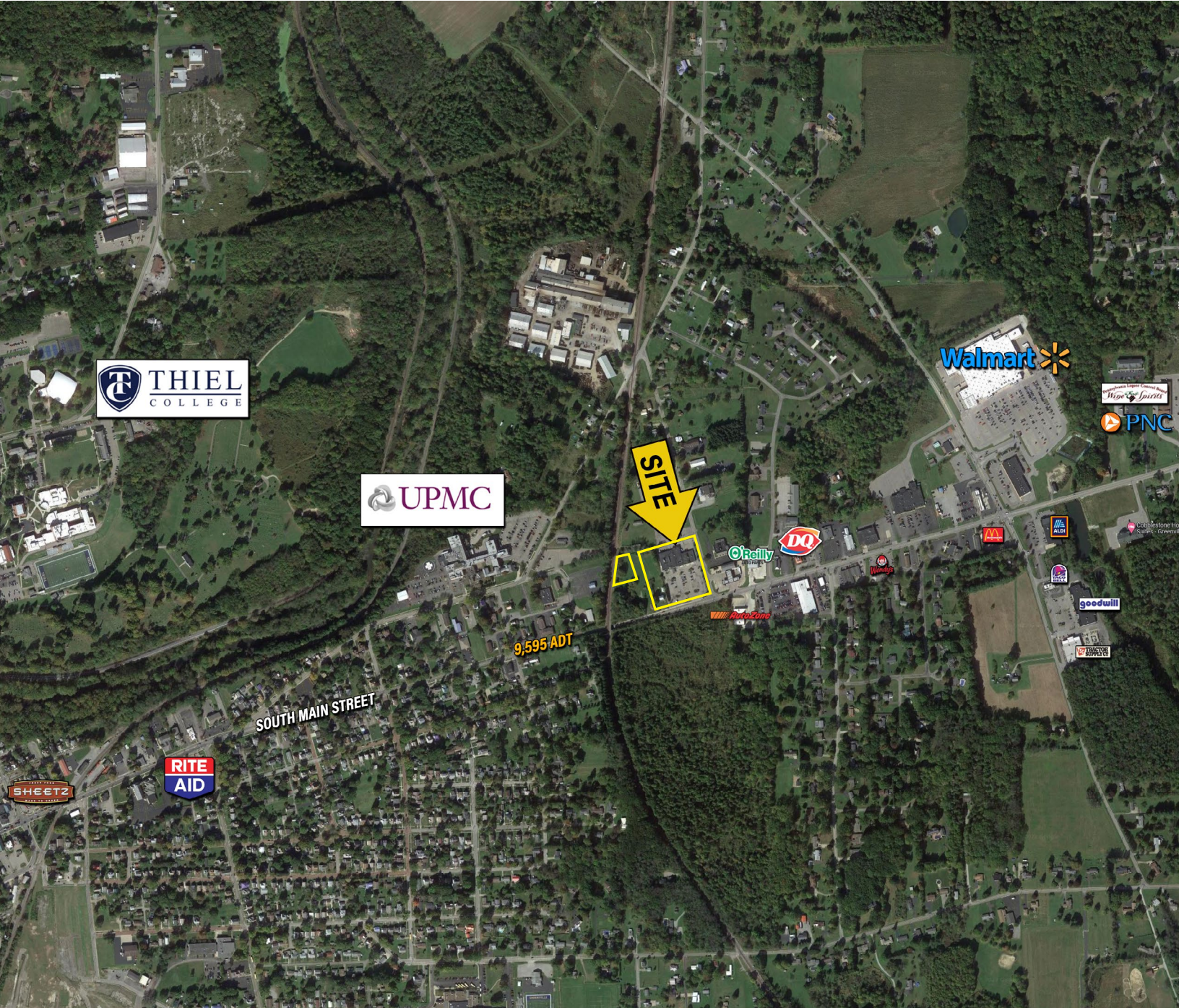
PITTSBURGH, PA 15222

[HANNACRE.COM](http://HANNACRE.COM)

All information furnished regarding property for sale, rental or financing is from sources deemed reliable. No representation is made as to the accuracy thereof, and it is submitted subject to errors, omissions, change of price, rental, or other conditions, prior sale lease, financing or withdrawal without notice. Hanna Langholz Wilson Ellis will make no representation, and assume no obligation, regarding the presence or absence of toxic or hazardous waste or substances or other undesirable material on or about the property.

# BUILDING & LAND FOR SALE

ONE GREENVILLE ORTHOPEDIC CENTER  
SOUTH MAIN ST. (RT 358) GREENVILLE, PA 16125 | MERCER COUNTY



**CONTACT:**

**ADAM JOYCE**

ajoyce@hannacre.com

412 261 2200

**JAKE VOGEL**

jvogel@hannacre.com

**HANNA COMMERCIAL REAL ESTATE**

11 STANWIX ST., SUITE 1024

PITTSBURGH, PA 15222

[HANNACRE.COM](http://HANNACRE.COM)

All information furnished regarding property for sale, rental or financing is from sources deemed reliable. No representation is made as to the accuracy thereof, and it is submitted subject to errors, omissions, change of price, rental, or other conditions, prior sale lease, financing or withdrawal without notice. Hanna Langholz Wilson Ellis will make no representation, and assume no obligation, regarding the presence or absence of toxic or hazardous waste or substances or other undesirable material on or about the property.