

PRICE REDUCED!



## CHURCH & PARKING FOR SALE REDEVELOPMENT OPPORTUNITY

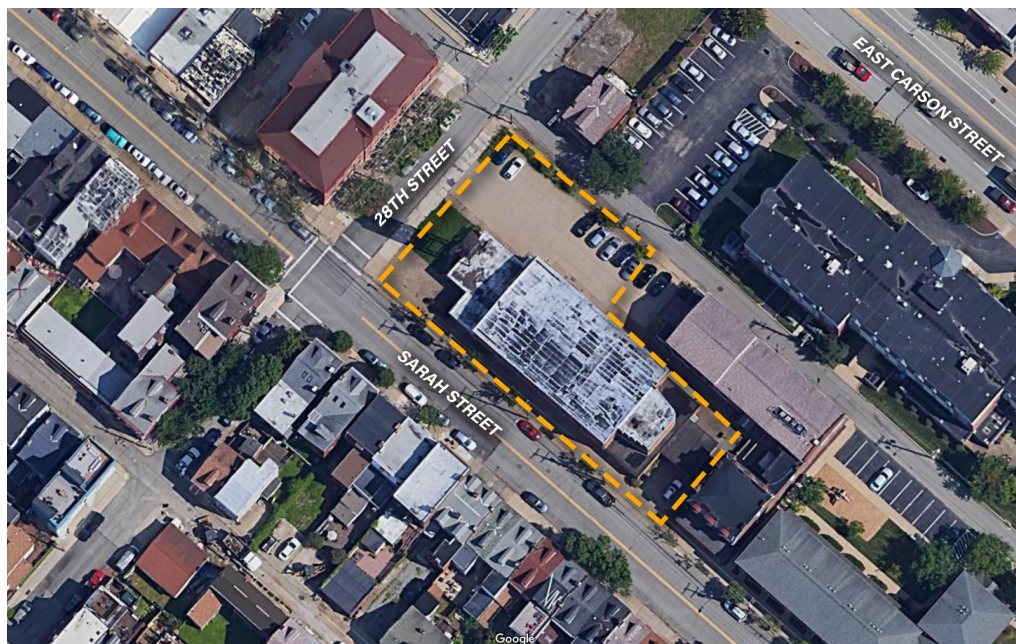
ST. PETER'S CHURCH | 2821 SARAH STREET, PITTSBURGH, PA 15203

- Great location in South Side
- Church is 14,636 SF
- Parking lot is 9,195 SF
- 0.54± acres total land
- One block off of East Carson Street
- Zoned R2-VH
- ~~\$1,375,000~~ \$1,250,000

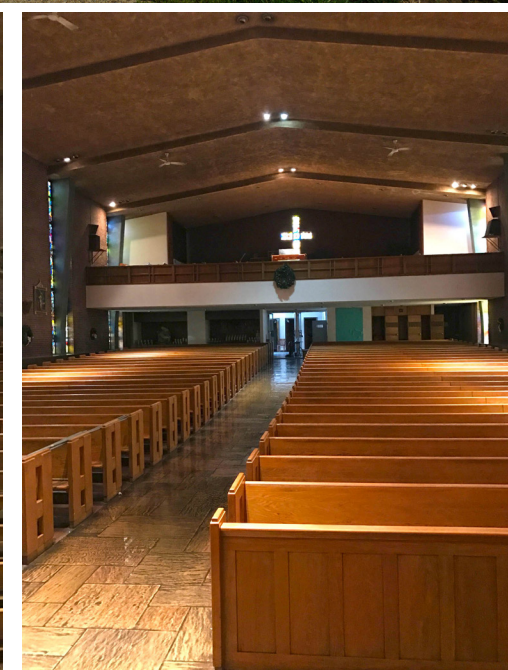
### CONTACT

TOM CONROY [tconroy@HannaLWE.com](mailto:tconroy@HannaLWE.com)

412.261.2200



All information furnished regarding property for sale, rental or financing is from sources deemed reliable. No representation is made as to the accuracy thereof, and it is submitted subject to errors, omissions, change of price, rental, or other conditions, prior sale lease, financing or withdrawal without notice. Hanna Langholz Wilson Ellis will make no representation, and assume no obligation, regarding the presence or absence of toxic or hazardous waste or substances or other undesirable material on or about the property.



One PPG Place • Suite 1640 • Pittsburgh, PA 15222  
412.261.2200 • HannalWE.com

All information furnished regarding property for sale, rental or financing is from sources deemed reliable. No representation is made as to the accuracy thereof, and it is submitted subject to errors, omissions, change of price, rental, or other conditions, prior sale lease, financing or withdrawal without notice. Hanna Langholz Wilson Ellis will make no representation, and assume no obligation, regarding the presence or absence of toxic or hazardous waste or substances or other undesirable material on or about the property.

**C O N T A C T**

**T O M C O N R O Y**

tconroy@HannaLWE.com

