

54 54TH STREET

Pittsburgh, PA 15201 | Lawrenceville

RIVERFRONT ACERAGE
FOR SALE



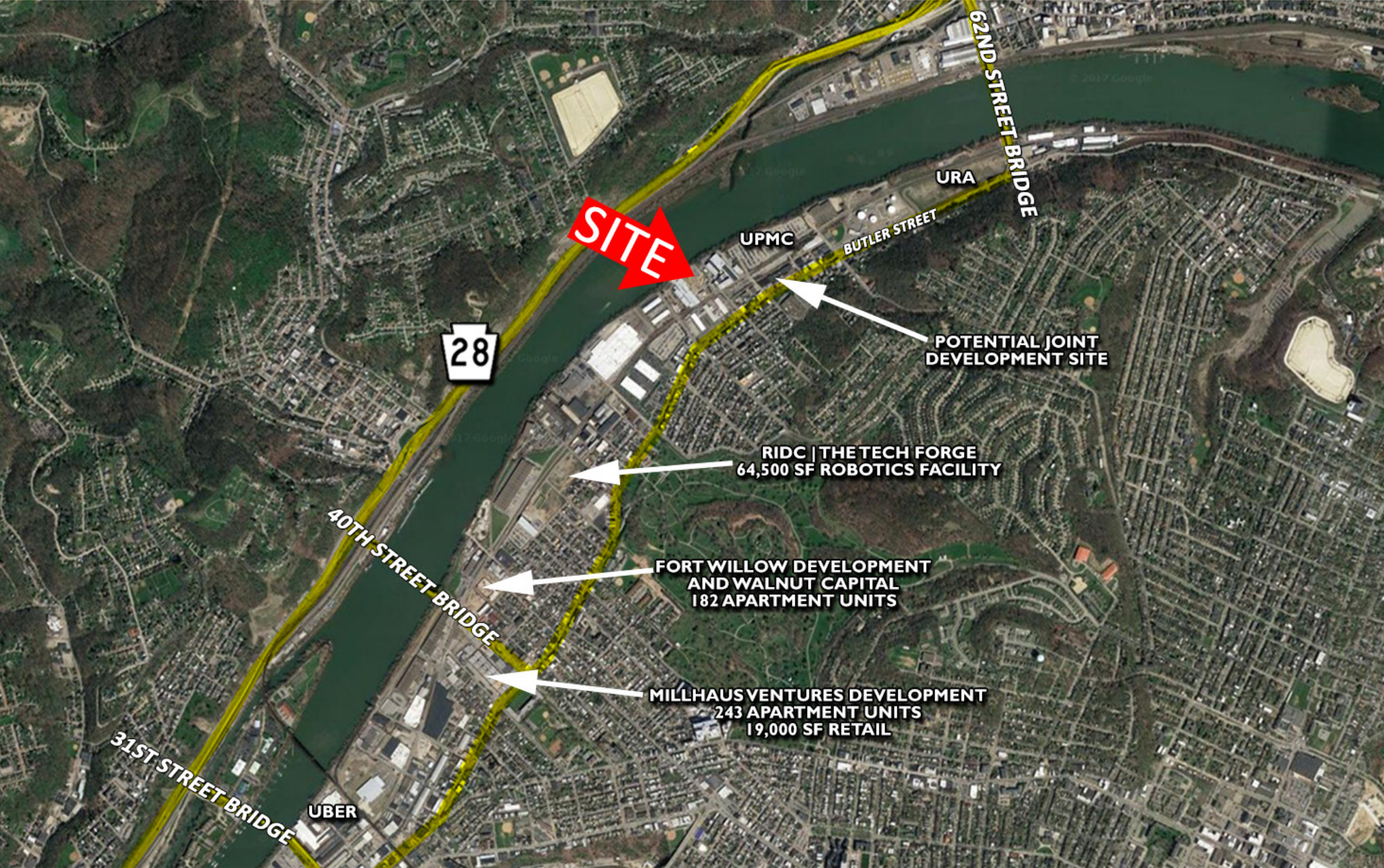
- 3.68 acres of riverfront land for sale (+/- 281' of riverfront frontage)
- Office Building
5,200 SF (2,600 SF/floor)
- Service Building
3,000 SF
- Warehouse Building
12,800 SF (6,400 SF/floor)
- Two mooring cells
- Zoned GI - General Industrial

CONTACT

Gary S. Wilson, SIOR
gwilson@HannaLWE.com
412.261.2200



All information furnished regarding property for sale, rental or financing is from sources deemed reliable. No representation is made as to the accuracy thereof, and it is submitted subject to errors, omissions, change of price, rental, or other conditions, prior sale lease, financing or withdrawal without notice. Hanna Langholz Wilson Ellis will make no representation, and assume no obligation, regarding the presence or absence of toxic or hazardous waste or substances or other undesirable material on or about the property.



CONTACT

Gary S. Wilson, SIOR
gwilson@HannaLWE.com

One PPG Place • Suite 1640 • Pittsburgh, PA 15222
412.261.2200 • HannaLWE.com

All information furnished regarding property for sale, rental or financing is from sources deemed reliable. No representation is made as to the accuracy thereof, and it is submitted subject to errors, omissions, change of price, rental, or other conditions, prior sale lease, financing or withdrawal without notice. Hanna Langholz Wilson Ellis will make no representation, and assume no obligation, regarding the presence or absence of toxic or hazardous waste or substances or other undesirable material on or about the property.