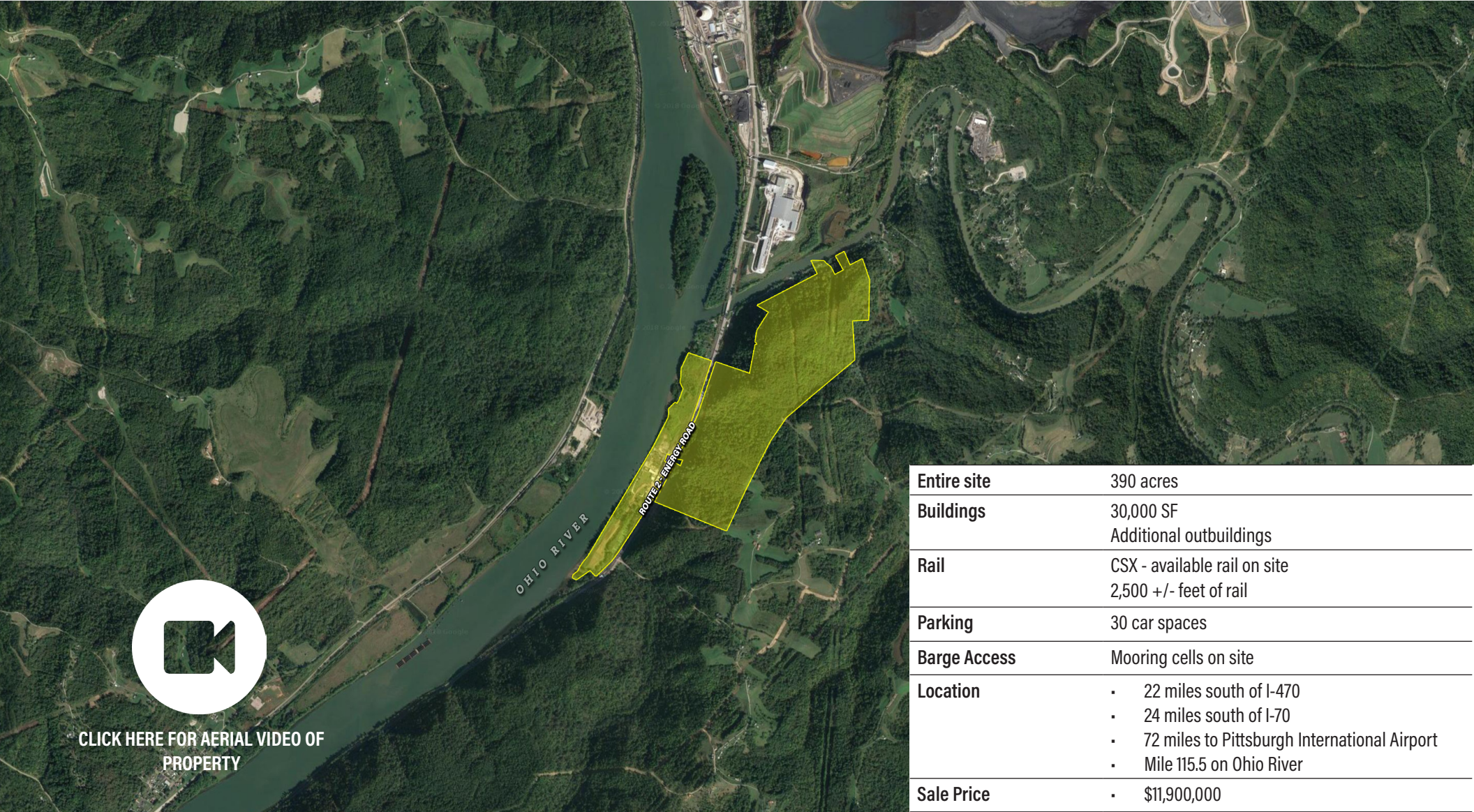


# COLUMBIAN CARBON - ROUTE 2

Woodlands, WV 26041 (South of Moundsville) - Marshall County

390+/- ACRES ALONG THE OHIO RIVER  
FOR SALE



CLICK HERE FOR AERIAL VIDEO OF  
PROPERTY

|              |  |
|--------------|--|
| Entire site  | 390 acres  |
| Buildings    | 30,000 SF<br>Additional outbuildings   |
| Rail         | CSX - available rail on site<br>2,500 +/- feet of rail   |
| Parking      | 30 car spaces  |
| Barge Access | Mooring cells on site  |
| Location     | <ul style="list-style-type: none"><li>22 miles south of I-470</li><li>24 miles south of I-70</li><li>72 miles to Pittsburgh International Airport</li><li>Mile 115.5 on Ohio River</li></ul> |
| Sale Price   | <ul style="list-style-type: none"><li>\$11,900,000</li></ul>   |



All information furnished regarding property for sale, rental or financing is from sources deemed reliable. No representation is made as to the accuracy thereof, and it is submitted subject to errors, omissions, change of price, rental, or other conditions, prior sale lease, financing or withdrawal without notice. Hanna Langholz Wilson Ellis will make no representation, and assume no obligation, regarding the presence or absence of toxic or hazardous waste or substances or other undesirable material on or about the property.

## CONTACT

JAMES YARISH [jyarish@hannalwe.com](mailto:jyarish@hannalwe.com)  
WV 0024394 412.261.2200

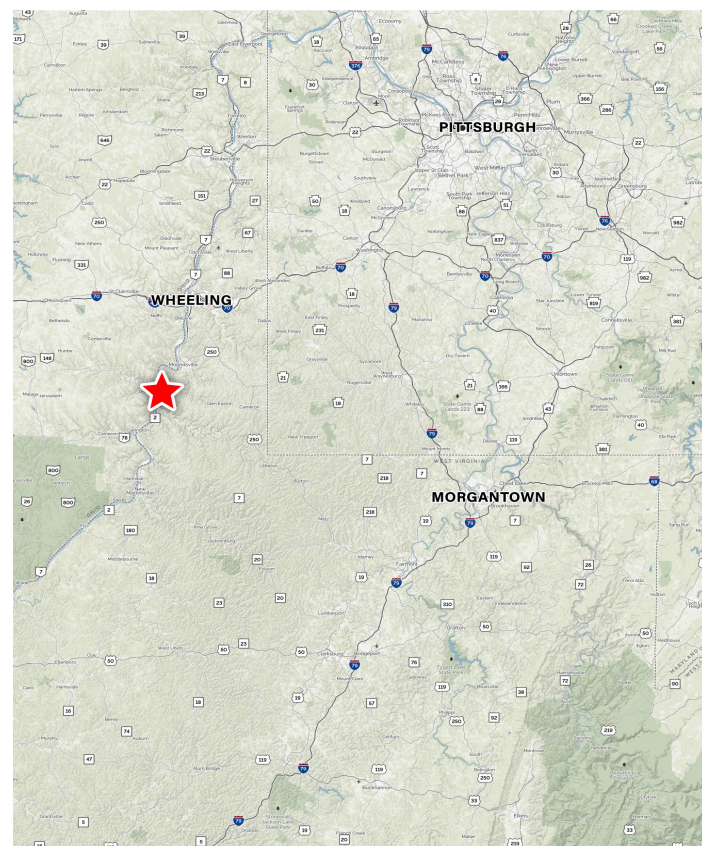




**CONTACT**

**JAMES YARISH** jyarish@hannalwe.com  
 WV 0024394 412.261.2200





JAMES YARISH jyarish@hannalwe.com  
WV 0024394 412.261.2200

One PPG Place • Suite 1640 • Pittsburgh, PA 15222  
412.261.2200 • HannaLWE.com

All information furnished regarding property for sale, rental or financing is from sources deemed reliable. No representation is made as to the accuracy thereof, and it is submitted subject to errors, omissions, change of price, rental, or other conditions, prior sale lease, financing or withdrawal without notice. Hanna Langholz Wilson Ellis will make no representation, and assume no obligation, regarding the presence or absence of toxic or hazardous waste or substances or other undesirable material on or about the property.