

**EXTENDED!  
CALL FOR OFFERS!**



**CLICK HERE TO  
VIEW AERIAL VIDEO**



## TWO WAREHOUSE & LIGHT MANUFACTURING BUILDINGS ON 15.5 ACRES

2240 BOYD ROAD | EXPORT, PA 15632 | WESTMORELAND COUNTY

**THURSDAY SEPTEMBER 30, 2021**

**CALL FOR OFFERS DUE BY 5:00PM EST ~~FRIDAY SEPTEMBER 17, 2021~~**

### CONTACT

JIM WINTER [jwinter@HannaLWE.com](mailto:jwinter@HannaLWE.com)

BRIAN GETTY [bgetty@HannaLWE.com](mailto:bgetty@HannaLWE.com)

412.261.2200



- 15.5 acres with two buildings
- All utilities at site
- Located off of Route 22 in Export/Delmont area with easy access to Route 66 (2 miles)
- Zoning  
Murrysville - Business District  
Penn Twp - Industrial Commerce District

**CLICK HERE TO SUBMIT OFFER**



All information furnished regarding property for sale, rental or financing is from sources deemed reliable. No representation is made as to the accuracy thereof, and it is submitted subject to errors, omissions, change of price, rental, or other conditions, prior sale lease, financing or withdrawal without notice. Hanna Langholz Wilson Ellis will make no representation, and assume no obligation, regarding the presence or absence of toxic or hazardous waste or substances or other undesirable material on or about the property.



**BUILDING ONE**

Size	76,390 SF Total 72,000 SF Warehouse/Light Manufacturing 4,390 SF Office
Ceiling Heights	20'
Dock Doors	8
Drive In Doors	1
Power	800 AMP 3 phase

**BUILDING TWO**

Size	27,720 SF
Ceiling Heights	20'
Dock Doors	2
Drive In Doors	1
Power	200 AMP 3 Phase



JIM WINTER [jwinter@HannaLWE.com](mailto:jwinter@HannaLWE.com)

BRIAN GETTY [bgetty@HannaLWE.com](mailto:bgetty@HannaLWE.com)

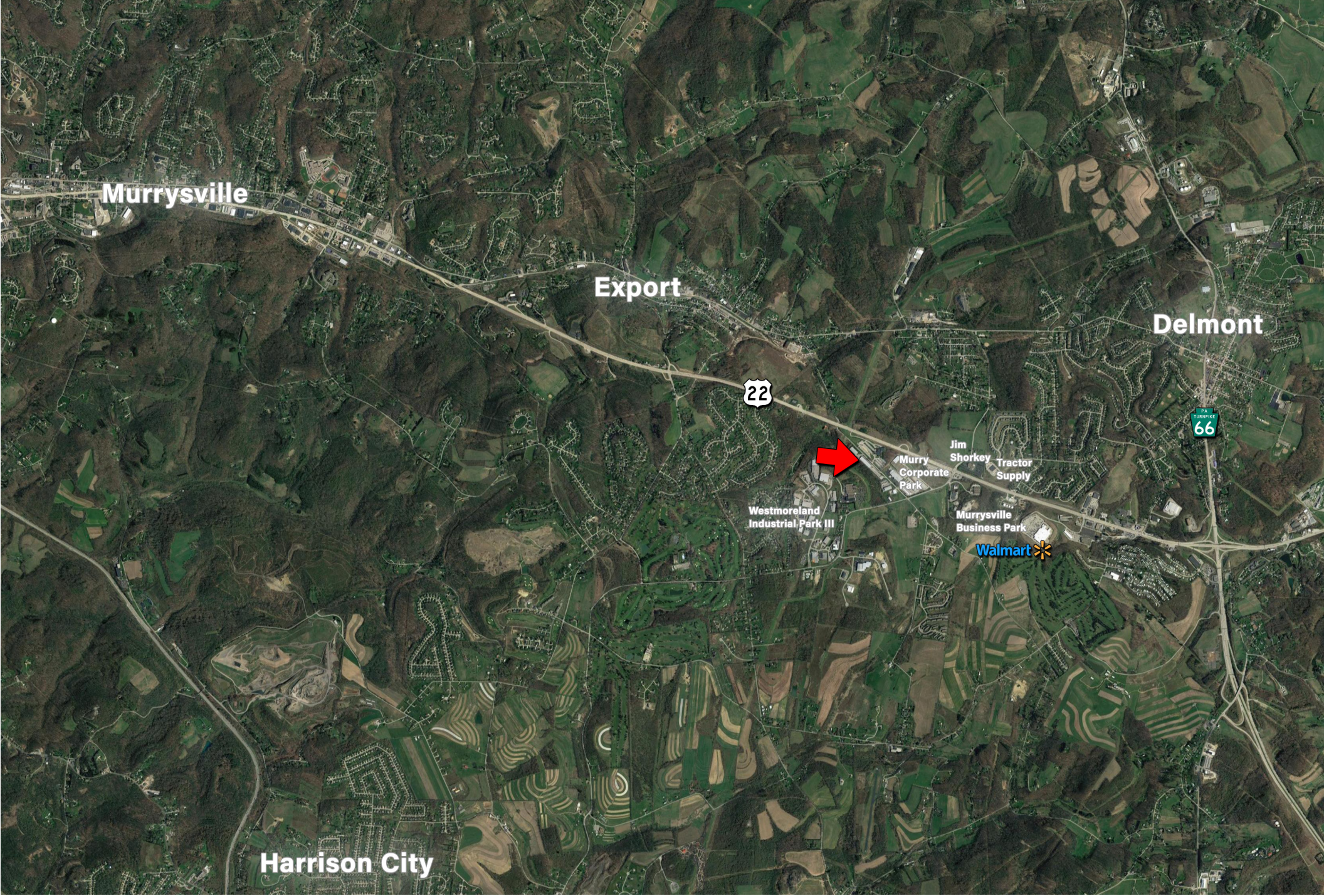




# SITE OUTLINE

2240 Boyd Road | Export, PA





# LOCATIONAL AERIAL

2240 Boyd Road | Export, PA