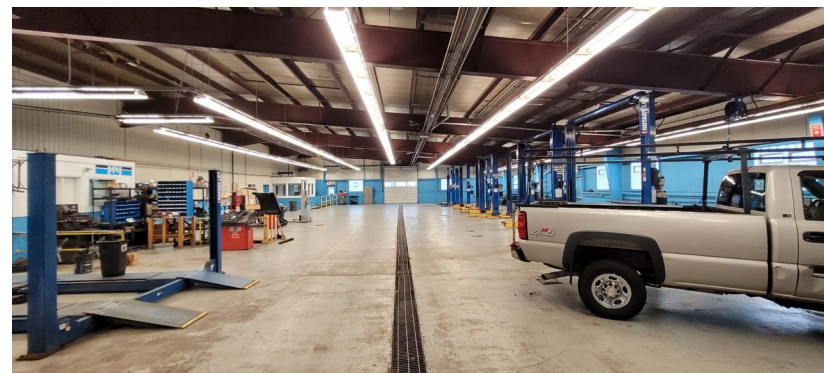


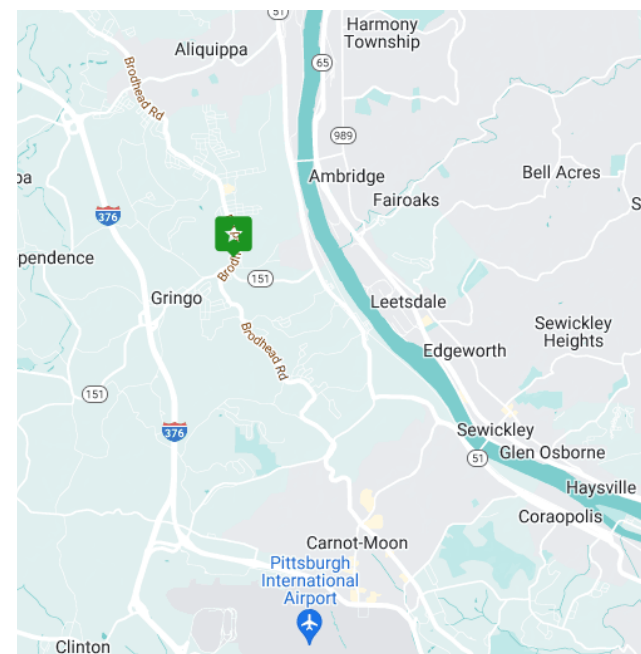
AUTO DEALERSHIP AVAILABLE

2085 BROADHEAD ROAD, ALIQUIPPA, PA 15001



PROPERTY FEATURES:

- 9.193 Acres of land for sale or lease
- 17,102 SF car dealership building
- Showroom, offices, parts, auto body and 10 service bays
- Three (3), 12' x 14' drive-in doors
- 220 lined parking spaces
- C-1, Highway Commercial District permits a wide variety of uses
- All public utilities available
- 9,725 ADT on Brodhead Road
- Convenient access to I-376 (Beaver Valley Expressway) and PA Route 51



CONTACT:

SANDY CIKOVIC

scikovic@hannalwe.com
412 261 2200

GARY WILSON, SIOR

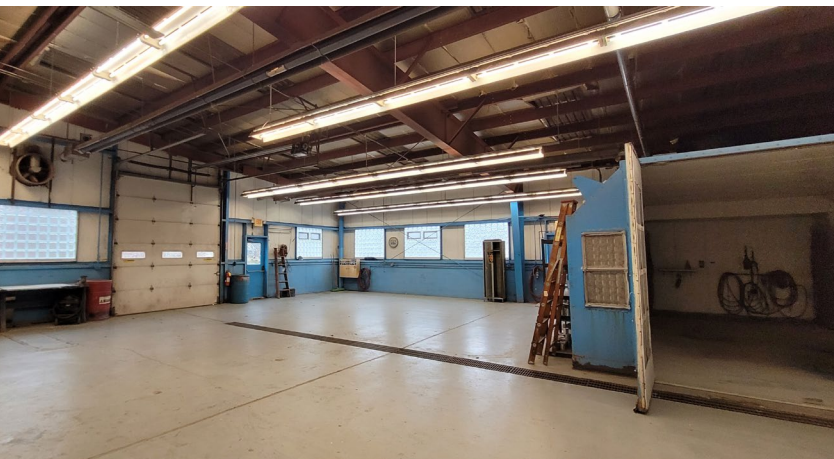
gwilson@hannalwe.com



All information furnished regarding property for sale, rental or financing is from sources deemed reliable. No representation is made as to the accuracy thereof, and it is submitted subject to errors, omissions, change of price, rental, or other conditions, prior sale lease, financing or withdrawal without notice. Hanna Langholz Wilson Ellis will make no representation, and assume no obligation, regarding the presence or absence of toxic or hazardous waste or substances or other undesirable material on or about the property.

AUTO DEALERSHIP AVAILABLE

2085 BROADHEAD ROAD, ALIQUIPPA, PA 15001



CONTACT:
SANDY CIKOVIC
scikovic@hannalwe.com
412 261 2200

GARY WILSON, SIOR
gwilson@hannalwe.com



All information furnished regarding property for sale, rental or financing is from sources deemed reliable. No representation is made as to the accuracy thereof, and it is submitted subject to errors, omissions, change of price, rental, or other conditions, prior sale lease, financing or withdrawal without notice. Hanna Langholz Wilson Ellis will make no representation, and assume no obligation, regarding the presence or absence of toxic or hazardous waste or substances or other undesirable material on or about the property.