

# 2000 TOWER WAY - BUILDING 6

# OFFICE / MEDICAL AVAILABLE

GREENSBURG, PA 15601



## PROPERTY HIGHLIGHTS

- Available Suites:  
2,450 SF 1st floor  
1,250 SF 2nd floor
- Immediately available
- Fantastic access to all of Greensburg's retail amenities
- Abundant, free parking
- Rates Starting at \$15.25/SF



FOR MORE INFORMATION, CONTACT:

**ADAM JOYCE**

ajoyce@hannacre.com  
412 515 2444

**JAKE VOGEL**

jvogel@hannacre.com  
412 261 7114



**HANNA COMMERCIAL REAL ESTATE**

11 STANWIX ST., SUITE 1024

PITTSBURGH, PA 15222

[HANNACRE.COM](http://HANNACRE.COM)

All information furnished regarding property for sale, rental or financing is from sources deemed reliable. No representation is made as to the accuracy thereof, and it is submitted subject to errors, omissions, change of price, rental, or other conditions, prior sale lease, financing or withdrawal without notice. Hanna Commercial Real Estate will make no representation, and assume no obligation, regarding the presence or absence of toxic or hazardous waste or substances or other undesirable material on or about the property.



# 2000 TOWER WAY - BUILDING 6

GREENSBURG, PA 15601



## FOR MORE INFORMATION, CONTACT:

**ADAM JOYCE**

[ajoyce@hannacre.com](mailto:ajoyce@hannacre.com)  
412 515 2444

**JAKE VOGEL**

[jvogel@hannacre.com](mailto:jvogel@hannacre.com)  
412 261 7114

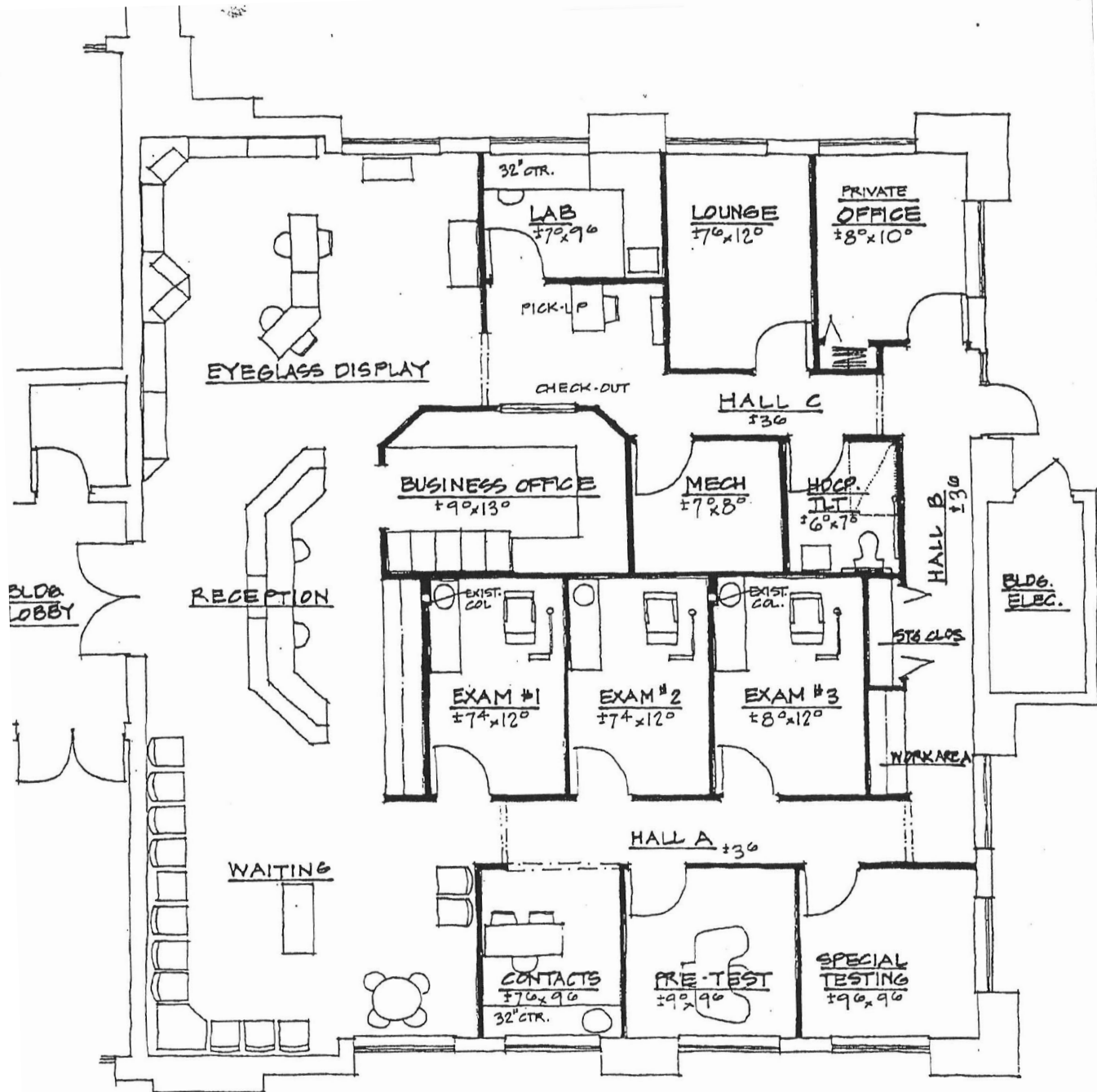
## HANNA COMMERCIAL REAL ESTATE

11 STANWIX ST., SUITE 1024

PITTSBURGH, PA 15222

[HANNACRE.COM](http://HANNACRE.COM)

All information furnished regarding property for sale, rental or financing is from sources deemed reliable. No representation is made as to the accuracy thereof, and it is submitted subject to errors, omissions, change of price, rental, or other conditions, prior sale lease, financing or withdrawal without notice. Hanna Commercial Real Estate will make no representation, and assume no obligation, regarding the presence or absence of toxic or hazardous waste or substances or other undesirable material on or about the property.



## 2,450 SF - FIRST FLOOR

FOR MORE INFORMATION, CONTACT:

**ADAM JOYCE**

ajoyce@hannacre.com  
412 515 2444

**JAKE VOGEL**

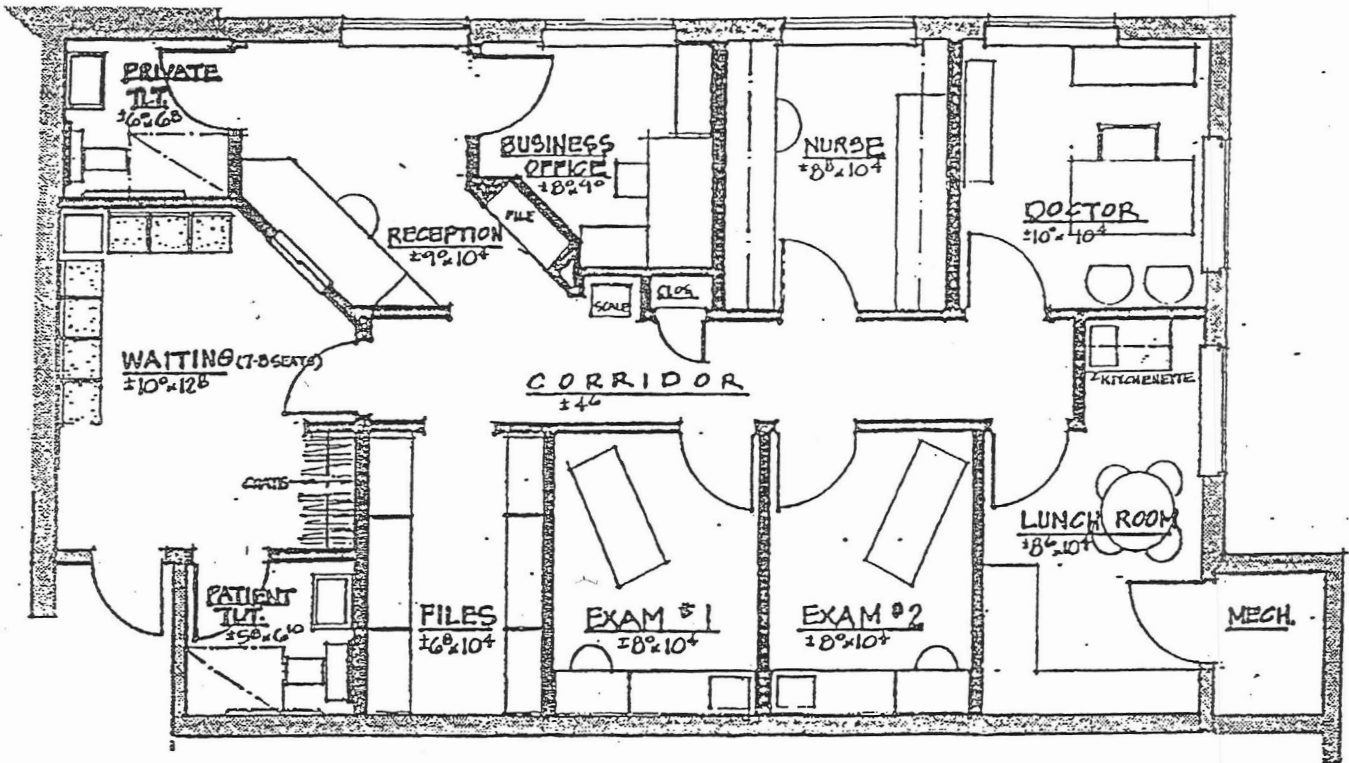
jvogel@hannacre.com  
412 261 7114

**HANNA COMMERCIAL REAL ESTATE**

11 STANWIX ST., SUITE 1024  
PITTSBURGH, PA 15222

[HANNACRE.COM](http://HANNACRE.COM)





OFFICE FLOOR PLAN

**1,250 SF - SECOND FLOOR**

FOR MORE INFORMATION, CONTACT:

**ADAM JOYCE**

ajoyce@hannacre.com  
412 515 2444

**JAKE VOGEL**

jvogel@hannacre.com  
412 261 7114

**HANNA COMMERCIAL REAL ESTATE**

11 STANWIX ST., SUITE 1024  
PITTSBURGH, PA 15222

[HANNACRE.COM](http://HANNACRE.COM)